



Service Bulletin



06/11/2020

BULLETIN # 271

WELDARC 145i

WELDARC 145I (MC106) FAN CABLE EXTENSION

CAUTION: The following information is intended for use by qualified service personnel. When the unit is energised LETHAL VOLTAGES are present on the electrical and electronic components. It is not intended that persons without suitable training and knowledge attempt to perform service tasks on the components of welding equipment.

The Weldarc 145i has had service agents experiencing difficulty with the removal of covers and the attachment of the fan cable to the main control PCB.

The difficulty has been experienced as the fan has been fitted as per the orientation in Figure 1. By rotating the fan 90° and looming the cable through the power cables to the connection, an additional 30mm is gained (see Figure 3). This additional length allows the removal and fitting of covers without the additional risk of disconnecting the fan cable.

The rear panel can be removed enough to reposition the fan without the need for disconnection of other components (see Figure 2).

Once completed a thorough test of the unit should be completed prior to refitting of the covers.

Once the covers have been fitted, the unit should be switched on, the fan should run up and stop. Once stopped the machine can be switched off, the fan will run to discharge the Bus capacitors. This confirms the fan is connected and operating correctly.

Affected serial number:

All machines and serial number ranges from 2020 production may be at risk, M1062Axx20xxx units.

The information provided in this sheet is accurate and reliable, however no warranty of accuracy or reliability is given and no responsibility arising in any other ways by errors or omissions is accepted.

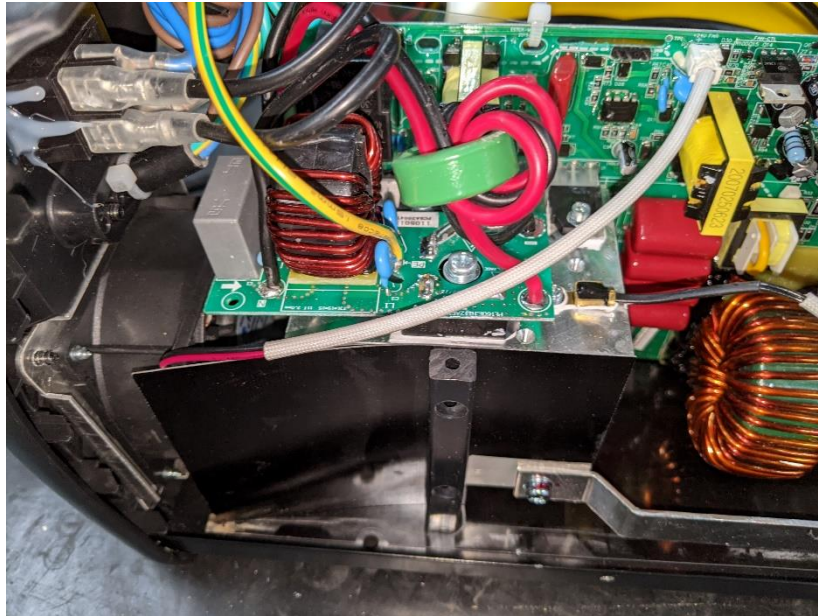


Figure 1 - Fan in its original orientation

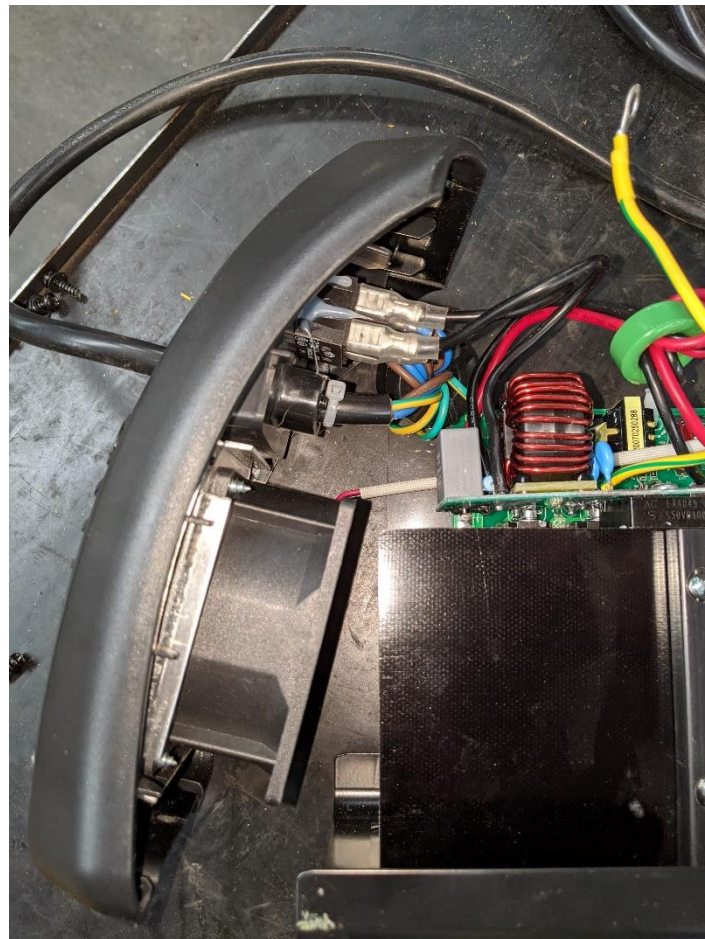


Figure 2 - Rear panel detached for access

The information provided in this sheet is accurate and reliable, however no warranty of accuracy or reliability is given and no responsibility arising in any other ways by errors or omissions is accepted.

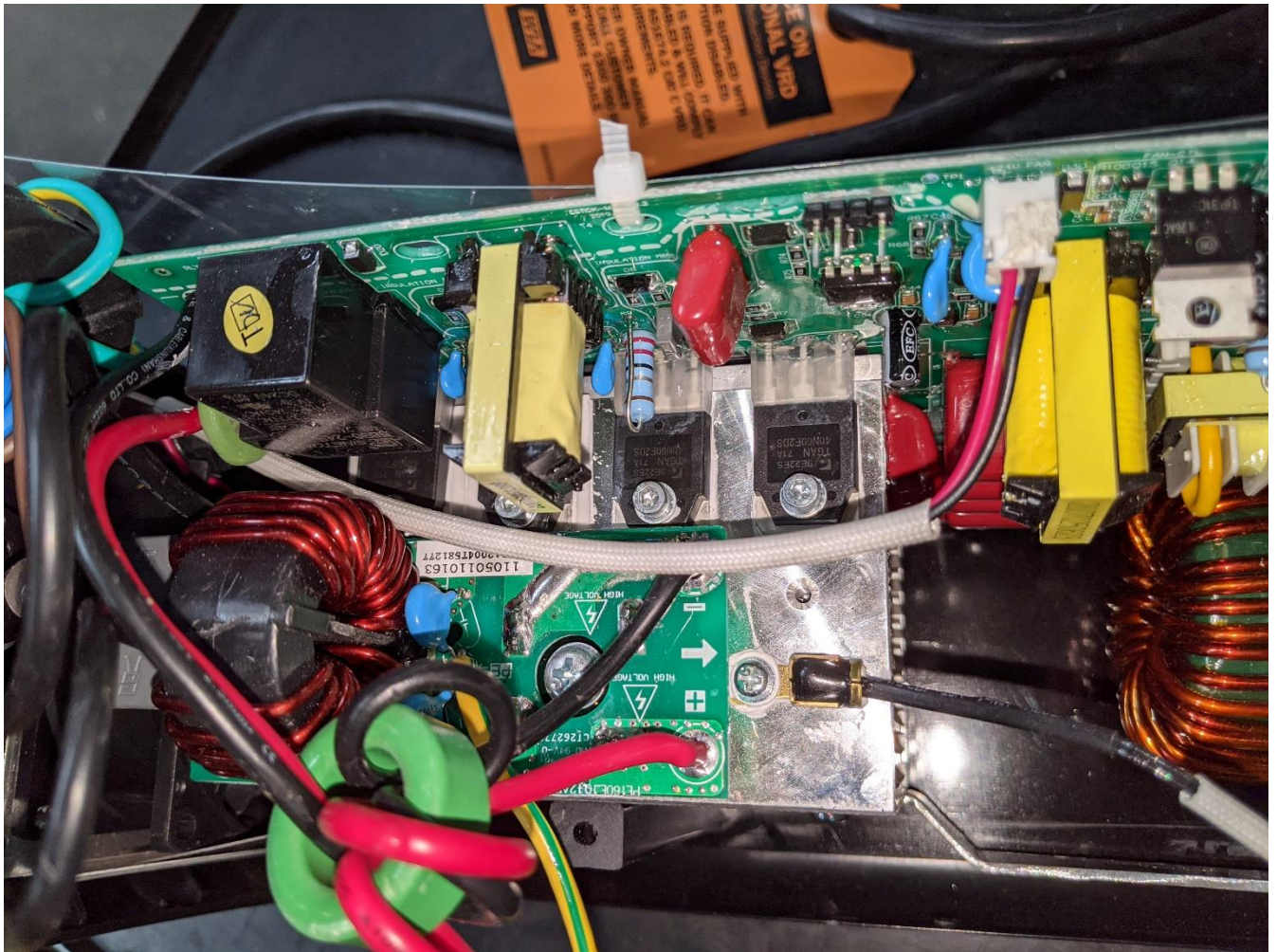


Figure 3 - Fan in improved orientation, cable loomed correctly

Andrew Stanley
Technical Service Coordinator

The information provided in this sheet is accurate and reliable, however no warranty of accuracy or reliability is given and no responsibility arising in any other ways by errors or omissions is accepted.