



# Service Bulletin



03/01/2020

WSB261

## BIG BLUE 800 X DUO AIR PAK

### RED/BLUE COMPRESSOR OIL HOSES ROUTING

**CAUTION: The following information is intended for use by qualified service personnel. When the unit is energised LETHAL VOLTAGES are present on the electrical and electronic components. It is not intended that persons without suitable training and knowledge attempt to perform service tasks on the components of welding equipment.**

There have been several noted incidents of incorrect routing of compressor hoses (part numbers 218601, 218602)(Figure 1.).

Due to the incorrect routing, a combination of external heat and internal pressure has caused instances of rupturing hoses. Any hoses found to be routed inside of the heat shield are to be re-routed on the outside (Figure 2.). Any hoses found to have signs of heat related damage, without rupture, are to be replaced under warranty.

Once the hoses have been re-routed, the compressor is to be functionally tested with the engine under load for a period of at least 15 minutes. This is to ensure correct re-seating of all connections and to allow all temperatures and pressures the opportunity to achieve working parameters.

#### **Affected serial number:**

BB800 X Duo Air Pak machines, serial numbers starting MG, MH, MJ, MK are potentially at risk.

The information provided in this sheet is accurate and reliable, however no warranty of accuracy or reliability is given and no responsibility arising in any other ways by errors or omissions is accepted.



welding.com.au 1300 300 884

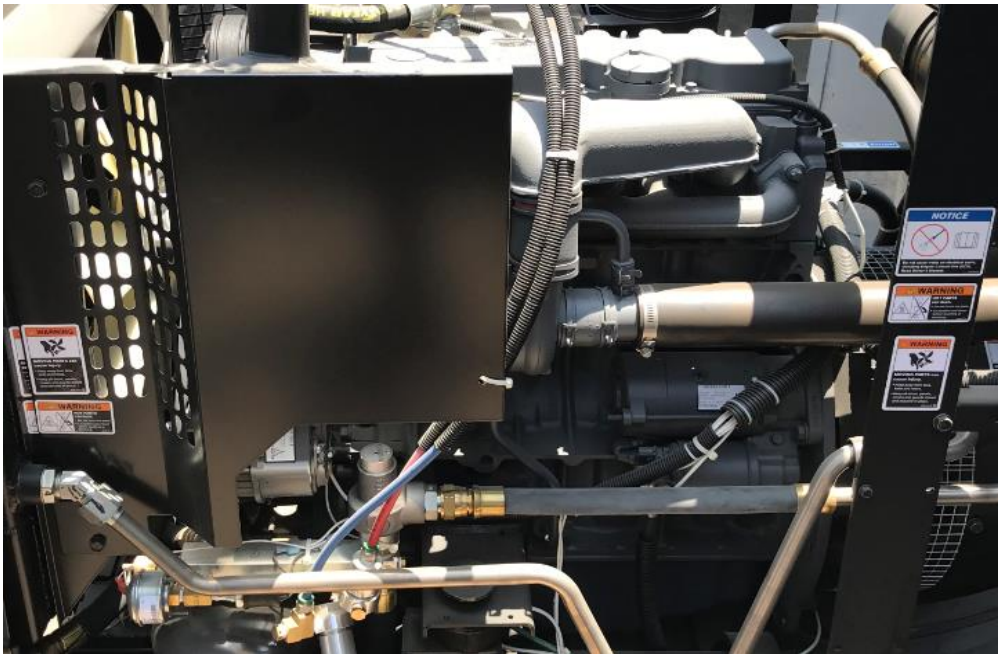


Figure 1

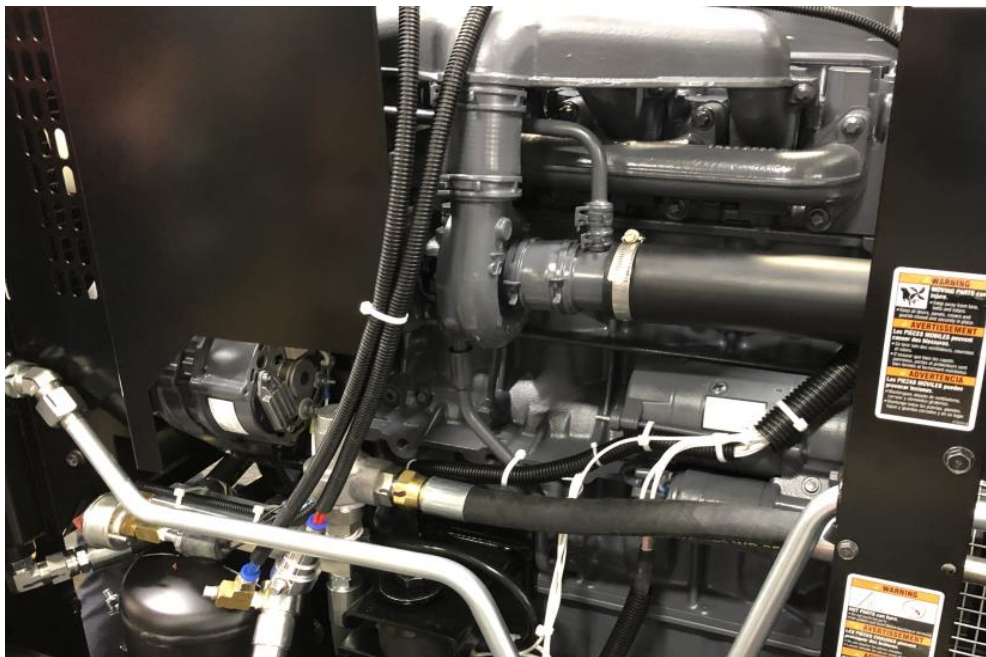


Figure 2

Andrew Stanley  
Technical Service Coordinator

The information provided in this sheet is accurate and reliable, however no warranty of accuracy or reliability is given and no responsibility arising in any other ways by errors or omissions is accepted.



welding.com.au 1300 300 884