



Service Bulletin

Date 06/07/2018

BULLETIN # 255

WELDMATIC 350I, 500I/CP129, CP140

ADJUSTMENT OF VOLTMETER & AMMETER DISPLAY

CAUTION: The following information is intended for use by qualified service personnel. When the unit is energised LETHAL VOLTAGES are present on the electrical and electronic components. It is not intended that persons without suitable training and knowledge attempt to perform service tasks on the components of welding equipment.

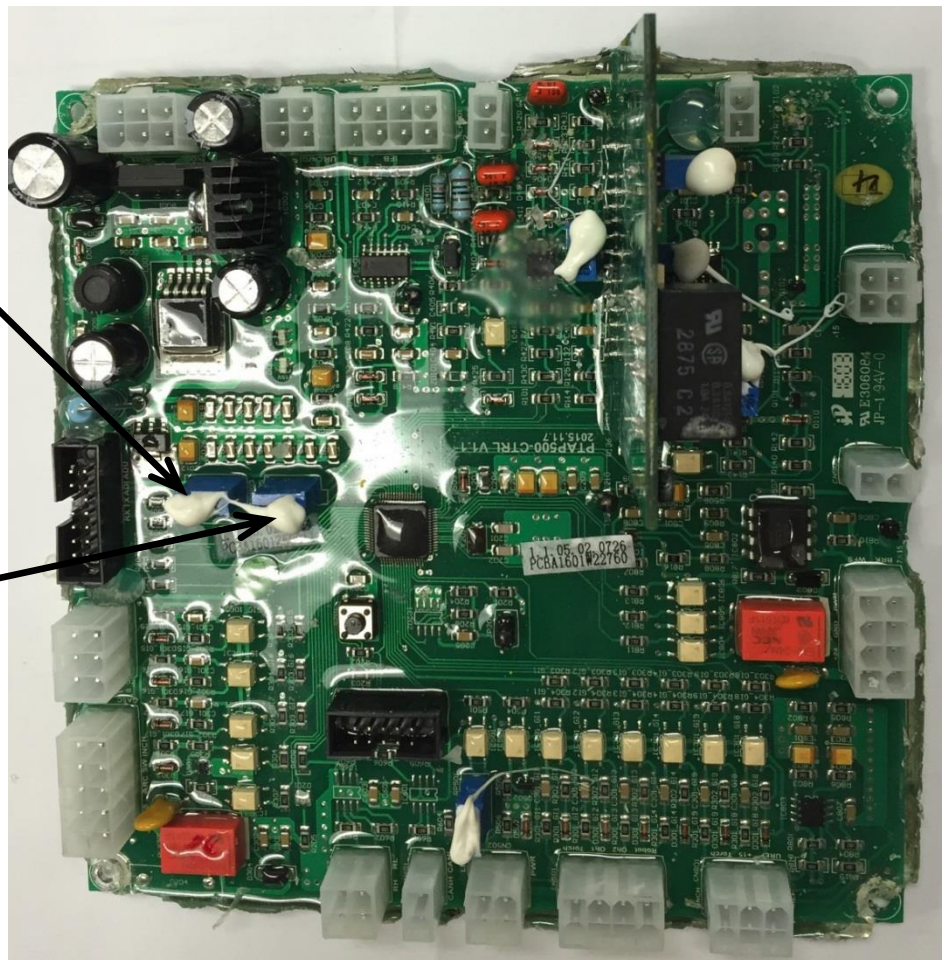
If required, the digital meters can be adjusted to accurately display the actual current and voltage. This can be achieved by removing the outer cover of the 350i or 500i and then adjusting potentiometers on the Main control PCB as shown below.

Adj RP903 for Current display adjustment.

Adj RP905 for Voltage display adjustment.

Front Panel, Digital
Meter, Current
Calibration adj
RP903

Front Panel, Digital
Meter, Voltage
Calibration adj
RP905



Hugh Stewart,
Technical Service Coordinator

The information provided in this sheet is accurate and reliable, however no warranty of accuracy or reliability is given and no responsibility arising in any other ways by errors or omissions is accepted.



welding.com.au 1300 300 884