



Service Bulletin



Date 03/05/2018

BULLETIN # 249 Issue B

WELDMATIC 200I & 250I, WELDARC 140I & 180I

DISABLE HIGH/LOW VOTAGE DETECTION

CAUTION: The following information is intended for use by qualified service personnel. When the unit is energised LETHAL VOLTAGES are present on the electrical and electronic components. It is not intended that persons without suitable training and knowledge attempt to perform service tasks on the components of welding equipment.

The Weldmatic 200i & 250i, and Weldarc 140i & 180i monitor the electrical supply and will detect an error if the incoming power supply is above or below specific limits. When this error is detected, the over temperature light is lit and operation ceases. There have been instances where this error is displayed even though the incoming power is not at a level which would cause a problem for the machine.

Experience has shown that the best way of dealing with this spurious error detection is to disable the voltage detection circuit.

Note: the over temperature function remains active even when high/low voltage detection has been disabled. This ensures that the unit is protected against damage by overheating.

The best way to disable high/low voltage detection is to remove resistor R216 from the Power Control pcb. R216 is a surface mount resistor and can easily be removed by snipping it with a sharp pair of side cutters.

The location of R216 is shown on page 2. The photo shows the Power Control pcb for a Weldmatic 200i, however the location of R216 is similar for Weldmatic 250i and Weldarc 140i and 180i.

Once R216 is removed, the under/over voltage detection can be checked by watching the thermal overtemperature led on the front panel as the power is turned off. If the under/over voltage detection circuit is active, the thermal overtemperature led on the front panel will light as the bus voltage decays a few seconds after the power is turned off.

With under/over voltage detection disabled, the overtemperature led on the front panel will not light after the power is turned off.

Voltage detection has been disabled on machines manufactured after following serial numbers:

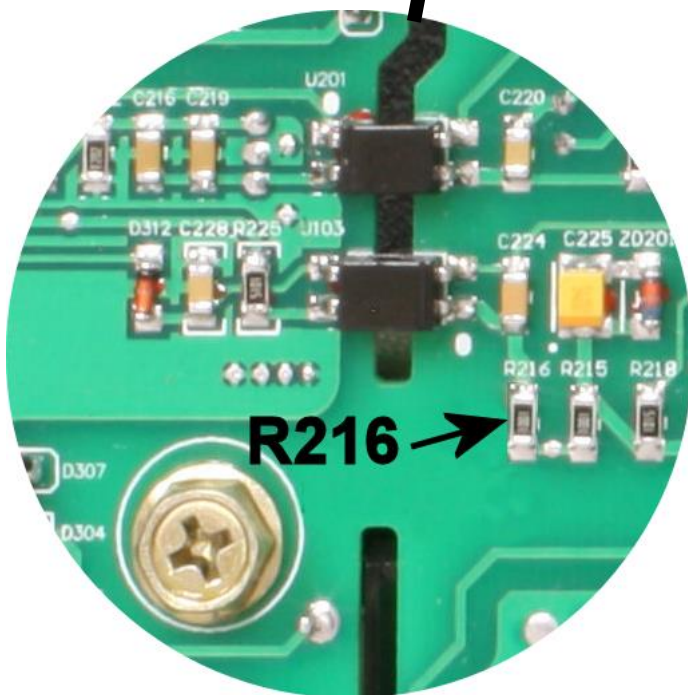
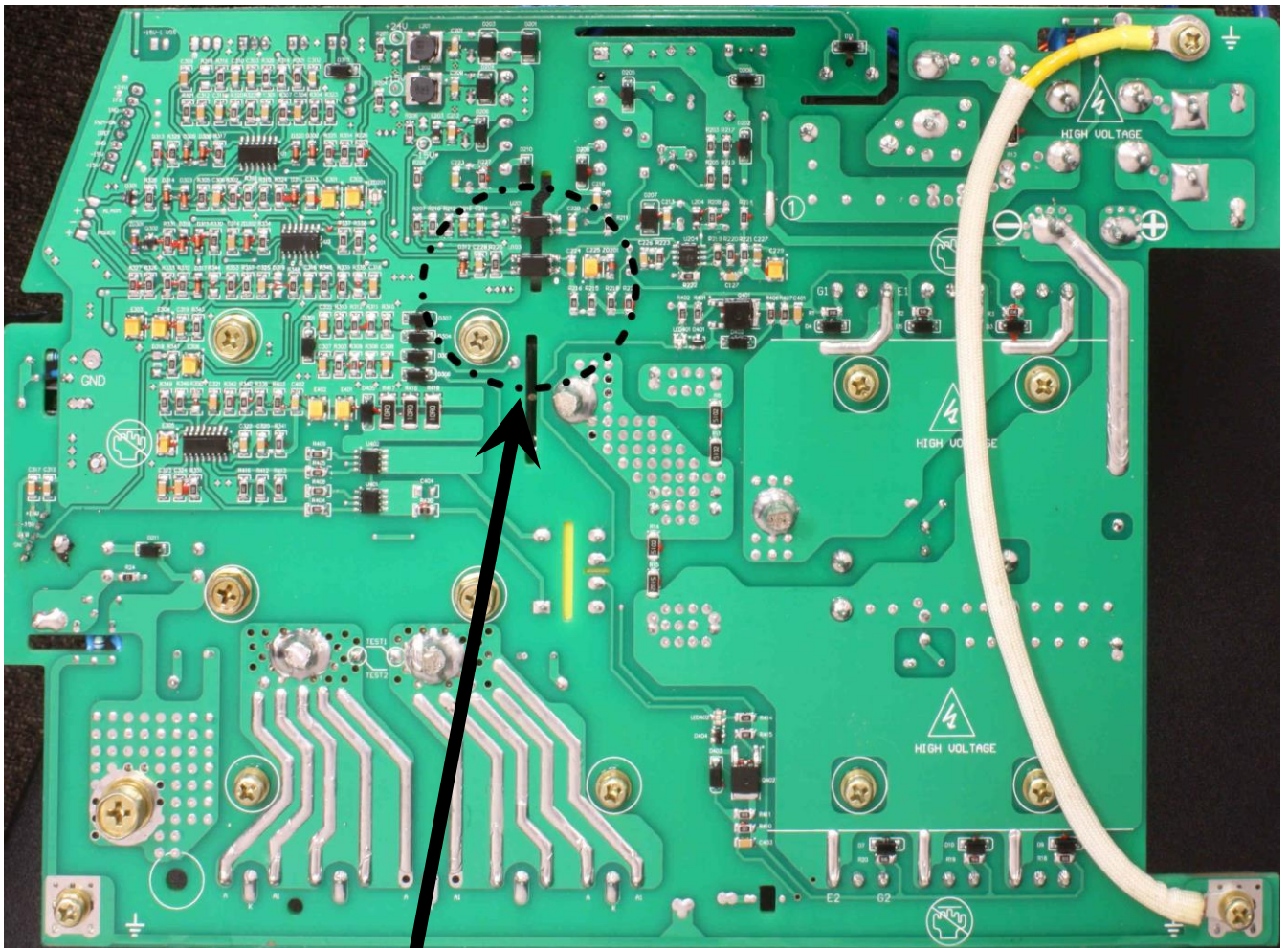
Weldarc 140i,	M1042B0817001	Weldarc 180i,	M1032B0817031
Weldmatic 200i,	C1372A0817025	Weldmatic 250i,	C1382A0717001

In manufacture, either D312 or R216 are not installed in order to disable voltage detection.

The information provided in this sheet is accurate and reliable, however no warranty of accuracy or reliability is given and no responsibility arising in any other ways by errors or omissions is accepted.



welding.com.au 1300 300 884



Hugh Stewart,
Technical Service Coordinator