

14 March 2007

BULLETIN #215

CP43 & CP44

REPLACEMENT OF CP43-41 & CP44-41 WELDING TRANSFORMERS

The laminations which were used in the manufacture of the CP43-41 and CP44-41 welding transformers are no longer available. Consequently we cannot supply replacement welding transformers for the CP43 Weldmatic 395 and CP44 Weldmatic 335.

The welding transformers used in the later version Weldmatic 335 (CP113) and Weldmatic 395 (CP114) are larger in size. They will not fit into the space inside a CP43 or CP44 so cannot be used for these models.

A number of transformer rewinding specialists around Australia have indicated that it is usually viable to rewind a primary coil if one has failed. If information regarding these companies is required, please contact WIA Internal Sales on 1300 300 884.

The primary windings for both of these transformers are identical, and the winding details are provided here to assist with rewinding.

NOTE

WIND 1 COIL AS SHOWN IN VIEW A
WIND 2 COILS AS SHOWN IN VIEW B
(TOTAL OF 3 COILS PER TRANSFORMER)

LAMINATION STACK HEIGHT=85mm

WINDING DETAILS

WIRE SIZE: 1.6mm DIA COPPER PL2
TURNS: 429
TAP AT 26, 53, 79, 254, 341, 429 TURNS
FINISH AT 429 TURNS

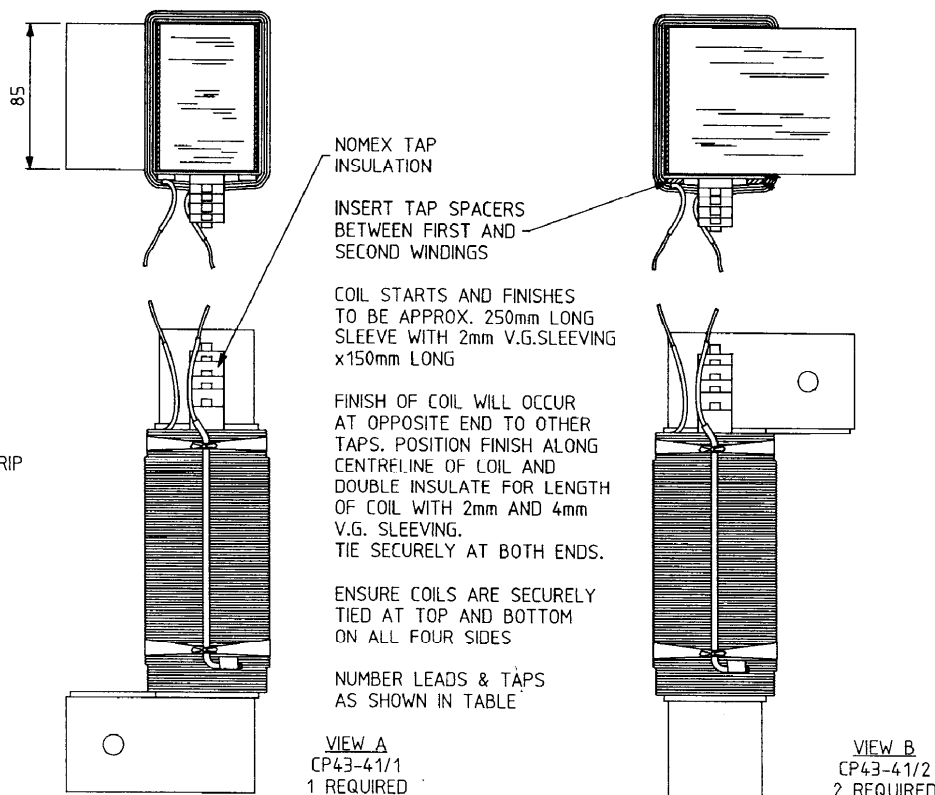
SPACE FINAL LAYER CENTRALLY ON LAMINATIONS
INSULATE BETWEEN LAYERS WITH ONE
THICKNESS OF .005" NOMEKX PAPER

FORM TAPS WITH 6mm WIDE TINNED COPPER STRIP.
INSULATE TAPS WITH 25mm WIDE x 0.01" NOMEKX STRIP

ALL STARTS, TAPS & FINISHES TO EXIT FROM
SAME END OF COIL. (AS SHOWN)

TAP NUMBER TABLE

START AT 0	TAP 1 (START)
TAP AT 26	TAP 2
TAP AT 53	TAP 3
TAP AT 79	TAP 4
TAP AT 254	TAP 5
TAP AT 341	TAP 6
FINISH AT 429	TAP 7 (FINISH)



Hugh Stewart,
Technical Service Coordinator

QUALITY WELDING PRODUCTS, SYSTEMS AND SERVICES

The information provided in this sheet is accurate and reliable, however no warranty of accuracy or reliability is given and no responsibility arising in any other ways by errors or omissions is accepted. Any information involving mains or high voltage is intended for use by qualified electrical personnel only.