

16 January 2006

BULLETIN # 200

MC91-0, MC92-0 & MC93-0

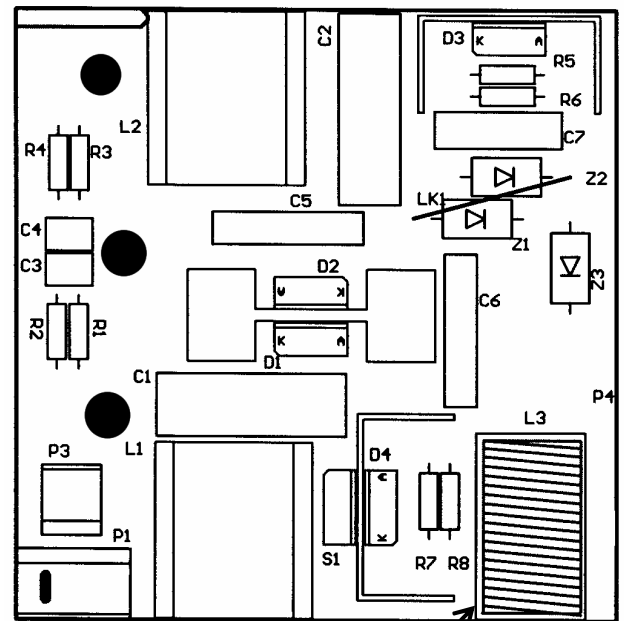
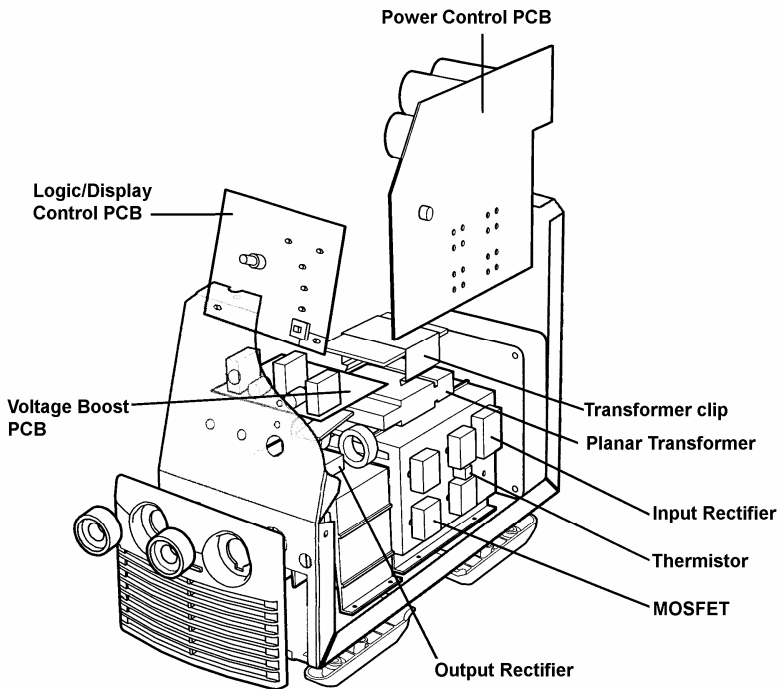
FERRITE CORED INDUCTOR

If a Weldarc MC91, 92 or 93 series machine is subject to severe impact, the ferrite cored inductor L3 on the Voltage Boost PCB may shift from its original position and cause a short circuit to the screw which secures the Logic/Display Control pcb. The following symptoms have been observed when this has happened:

1. Partial failure of the microprocessor on the Logic/Display Control pcb. This may cause the output to fail, or that the machine is locked in one welding mode and can't be changed.
2. If the inductor stays shorted to the screw, (and consequently to the machine frame), the wire which connects the Voltage Boost PCB to the output terminal may carry welding current and fail.

The ferrite cored inductor is now secured into position with electrical grade silicone adhesive (Dow Corning 748) during manufacture.

Any machine which is received for service work should be checked for this point. If necessary, return L3 to its proper position and secure with Dow Corning 748 or equivalent.



Secure the ferrite cored inductor L3 with electrical grade silicon adhesive

Hugh Stewart,
Technical Service Coordinator

QUALITY WELDING PRODUCTS, SYSTEMS AND SERVICES

The information provided in this sheet is accurate and reliable, however no warranty of accuracy or reliability is given and no responsibility arising in any other ways by errors or omissions is accepted. Any information involving mains or high voltage is intended for use by qualified electrical personnel only.