

W41, W55 & W56 WIREFEEDERS

CHATTERING CONTACTOR IN POWER SOURCE

We have become aware that the contactor in a Weldmatic power source connected to a W41-0, W41-1, W55 or W56 may chatter intermittently. This can occur in either of two instances.

1. When a TIG (or plasma) machine using HF is used nearby.
2. When the MIG gun trigger is released.

The cure in either case is to fit a snubber assembly to the triac circuit which turns the contactor on. This modification is suitable for any issue of W41-11 or W41-10 pcb.

Because these symptoms occur in only a very small number of instances, it is not incorporated on the current version of the W41-11 pcb, but will be considered for any future variant.

Procedure

Remove R7 (see Fig 1 on Pg 2)

Add C*, R* & R**

C* = 0.1uF, polyester

R* = 390ohm, ¼ watt

R** = 47ohm, ¼ watt

Hugh Stewart,
Technical Service Coordinator

QUALITY WELDING PRODUCTS, SYSTEMS AND SERVICES

The information provided in this sheet is accurate and reliable, however no warranty of accuracy or reliability is given and no responsibility arising in any other ways by errors or omissions is accepted. Any information involving mains or high voltage is intended for use by qualified electrical personnel only.

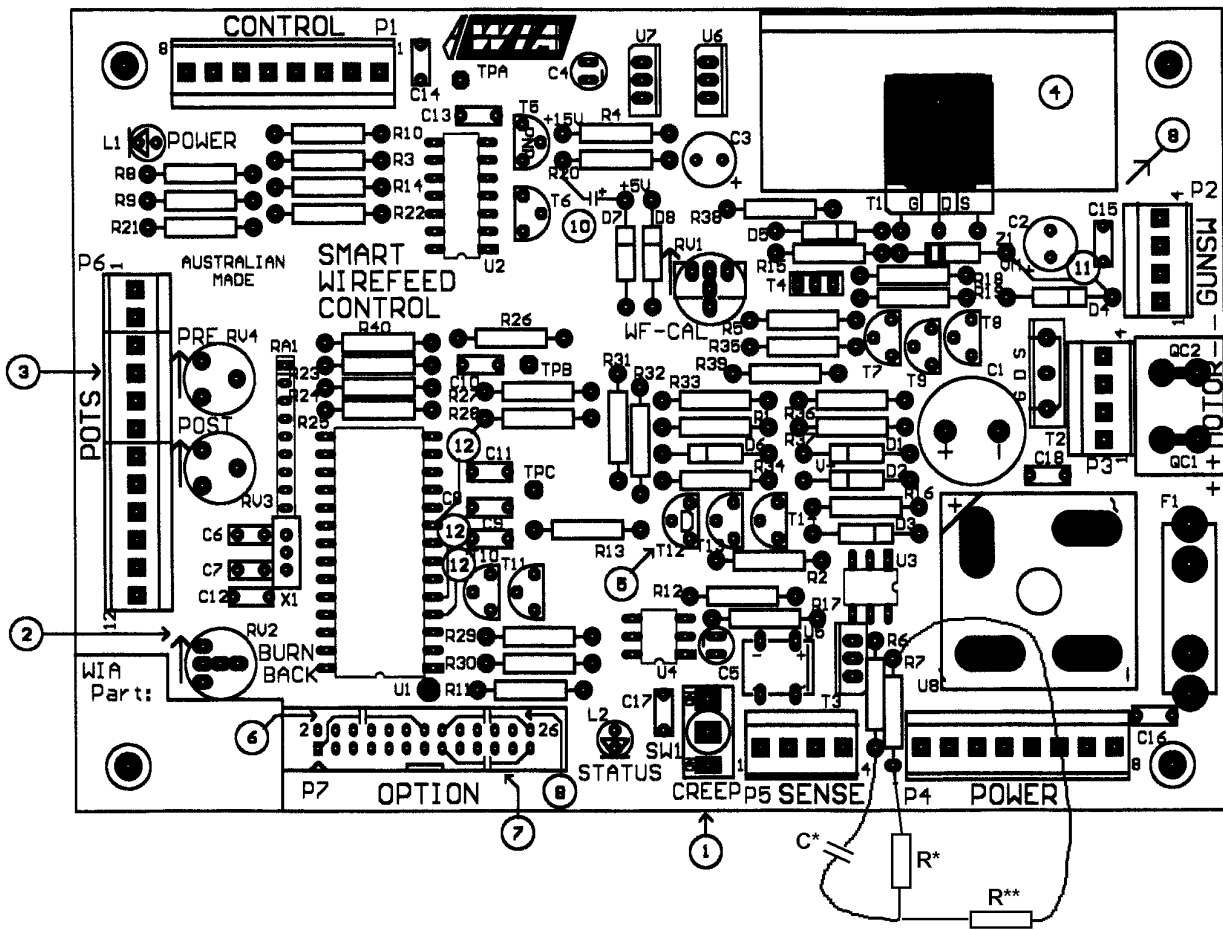


Fig 1