

24 August 2001

BULLETIN #171

MILLER GOLD STAR 140 AND GOLD STAR 160i**TROUBLE SHOOTING GUIDE**

The following technical information has been compiled to help with trouble shooting the Miller Gold Star 140 and Gold Seal 160i machines.

Specifications

Gold Star 140	
Input Voltage	240v
Phase	1
Frequency	50 Hz
Min recommended generator capacity	6KVA
Power factor	0.8 (140A)
Primary Fuse	20 A (slow blow)
Open Circuit Voltage	55v
Rated Current	130A @ 60% 120A @ 100%
Dimensions	310x135x235 mm
Weight	6.5kg

Gold Seal 160i	
Input Voltage	240v
Phase	1
Frequency	50 Hz
Min recommended generator capacity	6KVA
Power factor	0.8 (150A)
Primary Fuse	32 A (slow blow)
Open Circuit Voltage	90A
Rated Current	160A @ 60% 130A @ 100%
Pulsing Frequency	0.5 – 300 Hz
Pre – flow of shielding gas	0.5 sec
Post flow of shielding gas	3 – 20 sec
Dimensions	400x200x286 mm
Weight	13kg

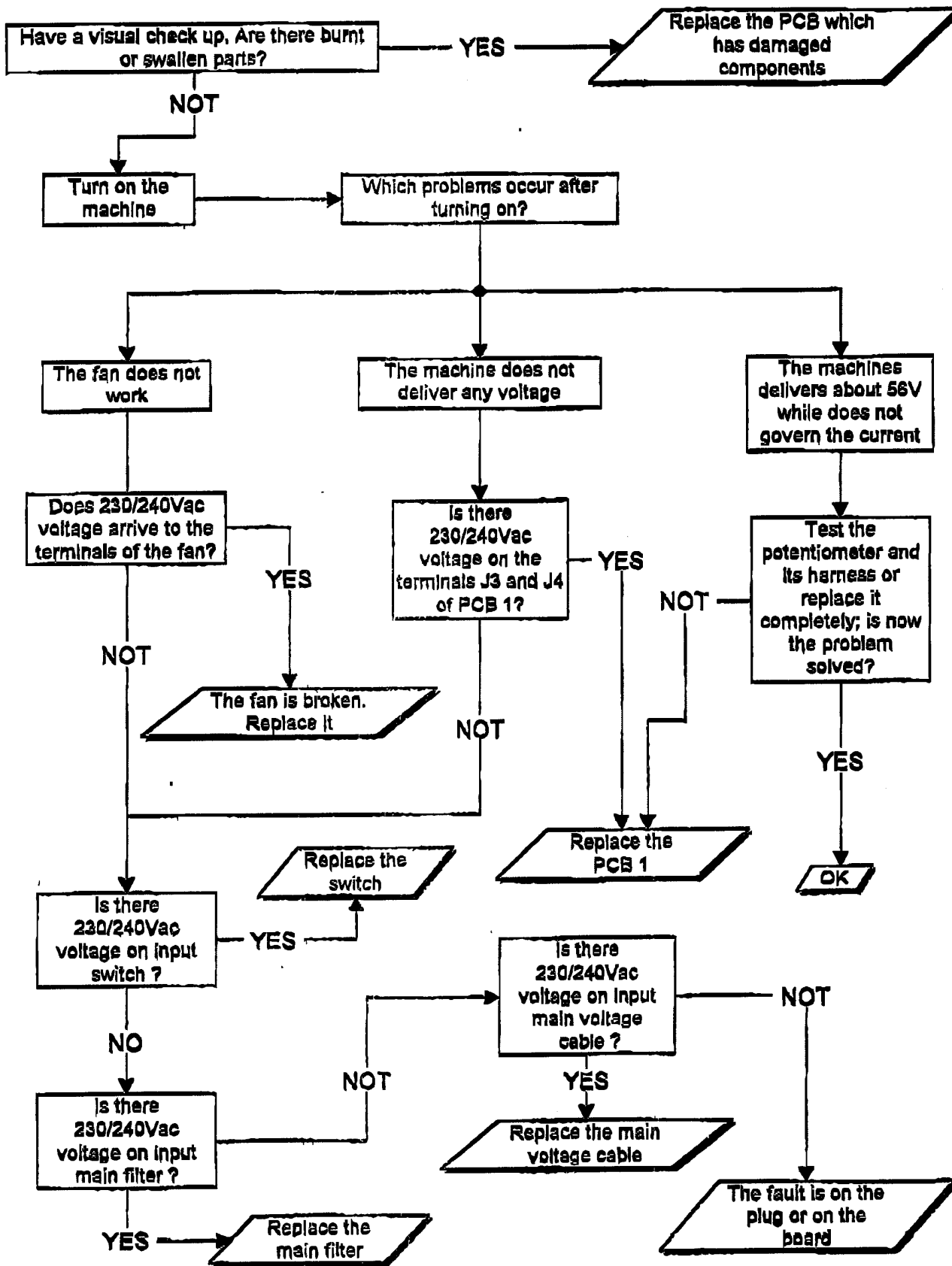


Hugh Stewart,
Technical Service Co-ordinator – Marketing

QUALITY WELDING PRODUCTS, SYSTEMS AND SERVICES

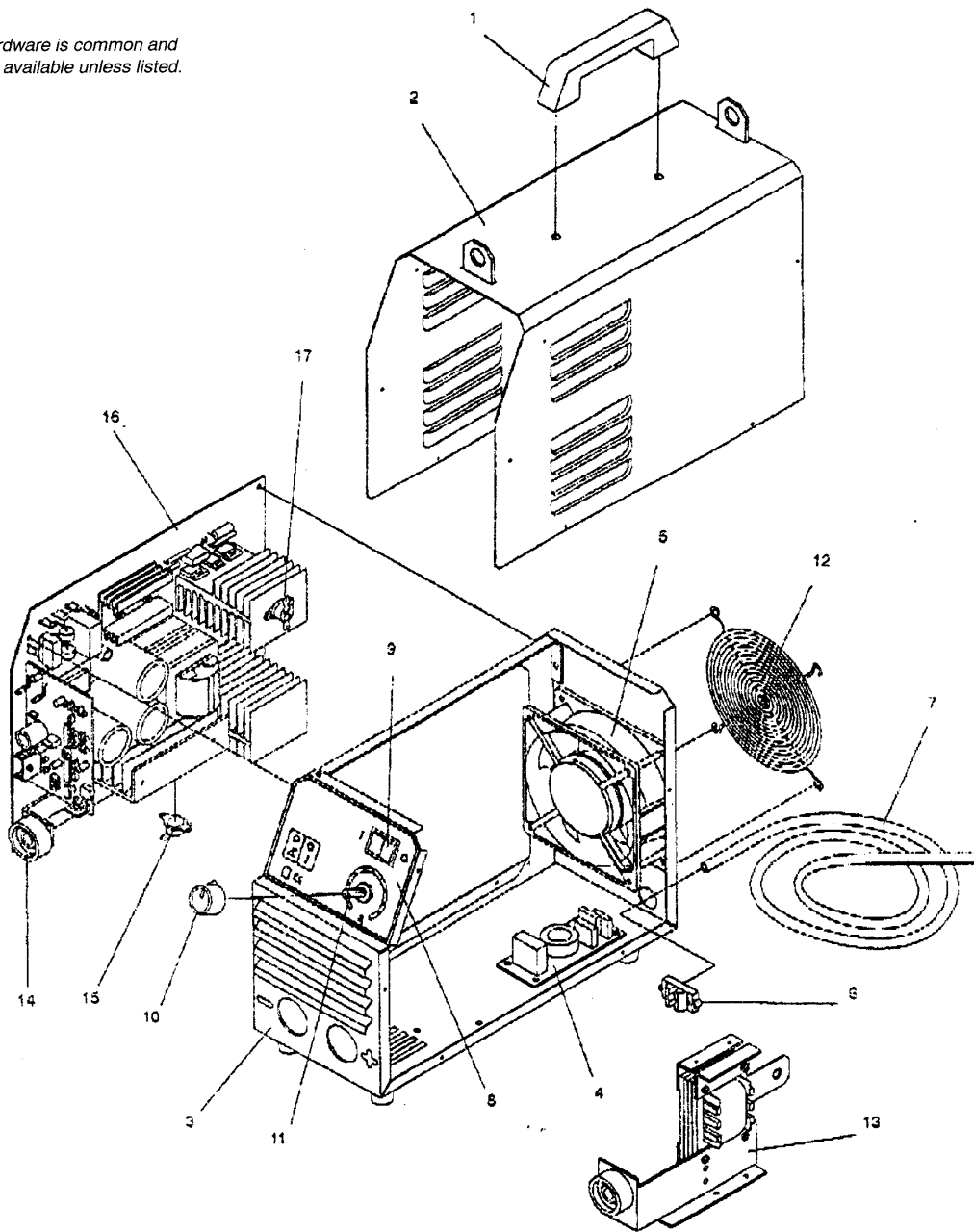
The information provided in this sheet is accurate and reliable, however no warranty of accuracy or reliability is given and no responsibility arising in any other ways by errors or omissions is accepted

GOLD STAR 140 230/240V 1ph - Instructions for the first intervention



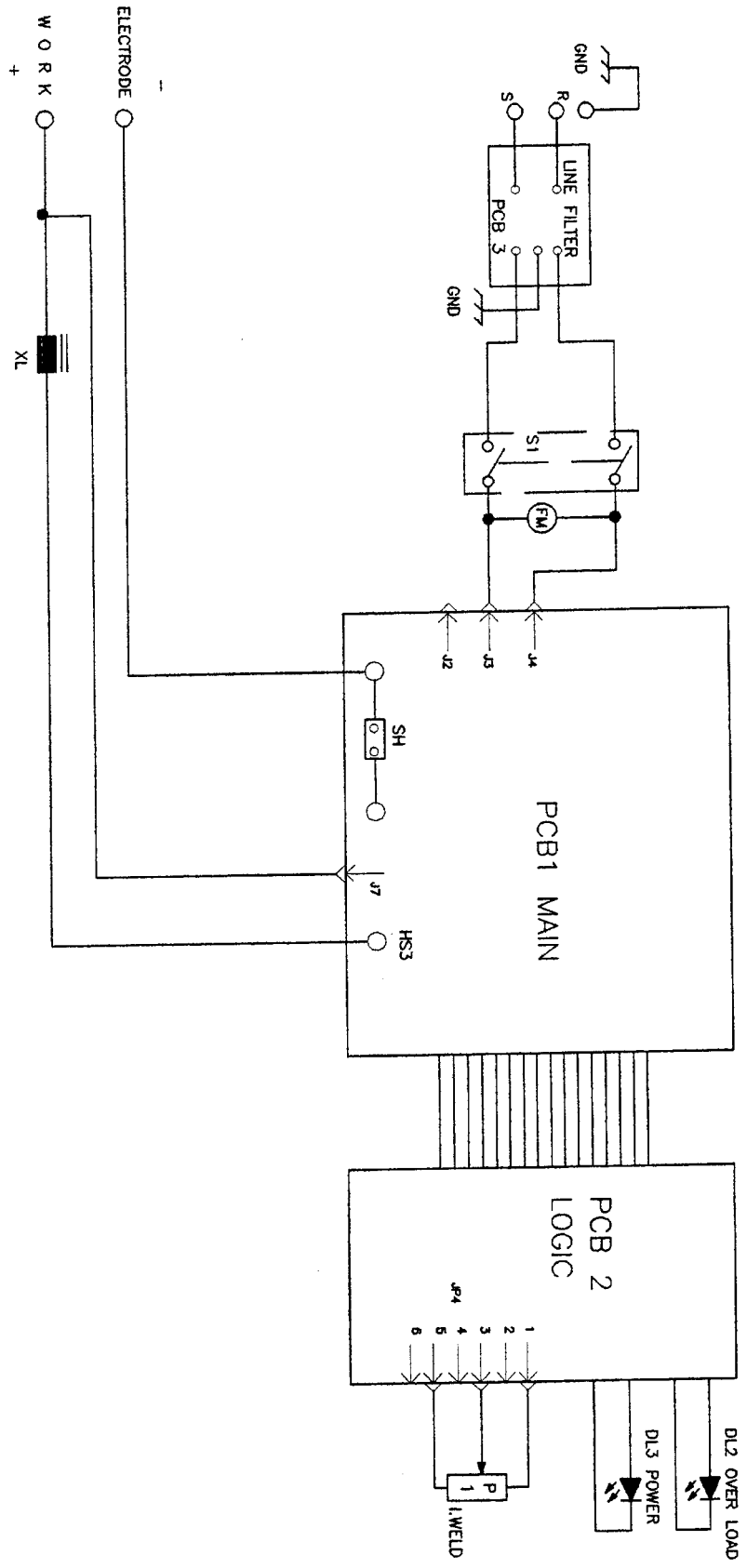
Gold Star 140 Parts List

☐ Hardware is common and not available unless listed.

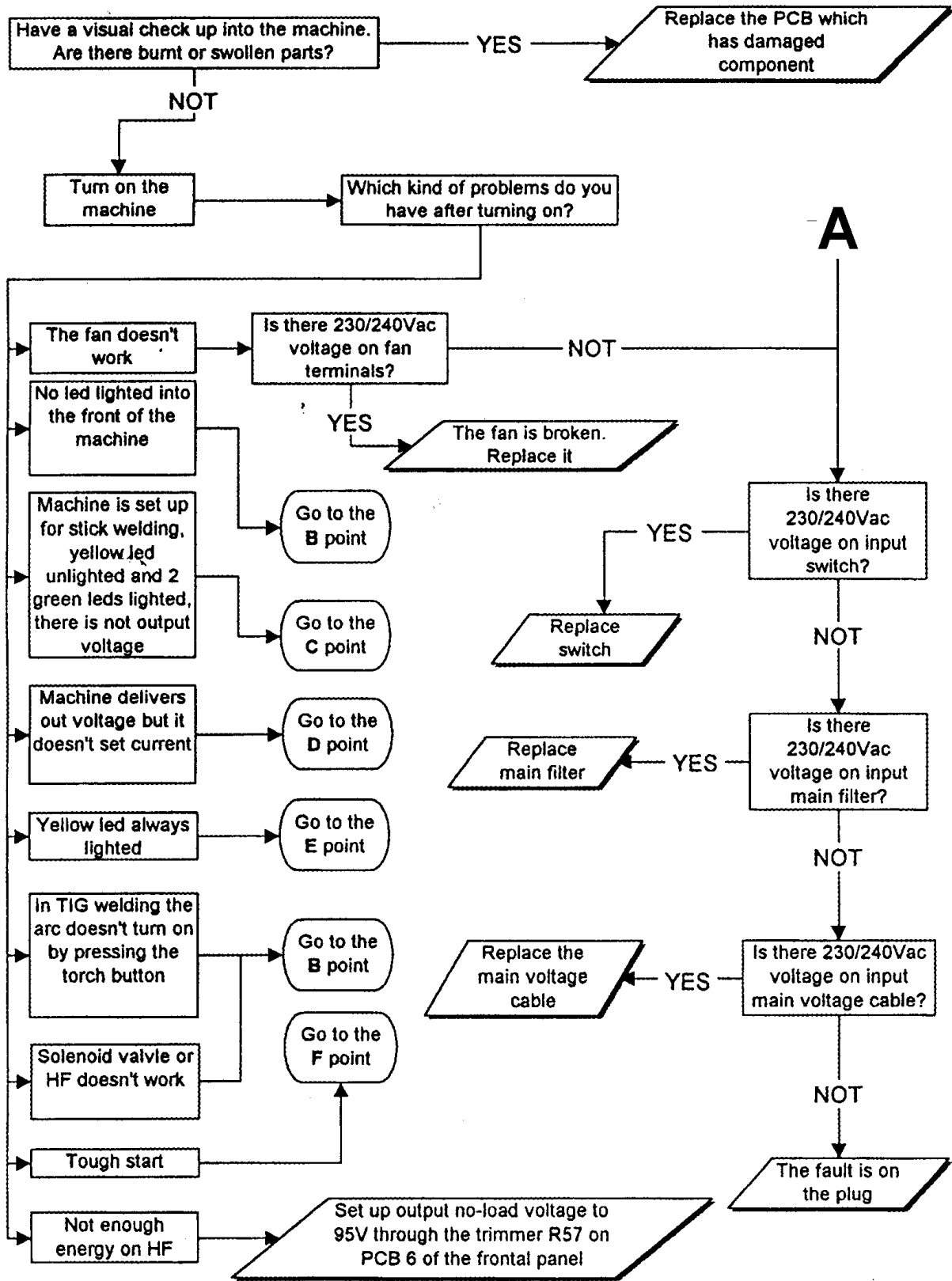


Item	Part Number	Description	Qty
1	156 002 025	Handle	1
2	156 121 006	Outer Case	1
3	156 006 011	Chassis	1
4	057 101 005	PC3, Filter PCB	1
5	056 126 062	Fan	1
6	656 089 027	Grommet	1
7	057 014 096	Primary Cable	1
8	956 142 266	Front Panel	1
9	056 067 157	On/Off Switch	1
10	000 097 922	Knob	1
11	056 059 254	Potentiometer	1
12	116 170 002	Grille	1
13	057 098 009	Inductor	1
14	056 076 207	Terminal	1
15	056 159 010	Thermostat	1
16	058 075 002	PC1 & PC2, Main & Logic PCB	1
17	056 159 011	Thermostat	1

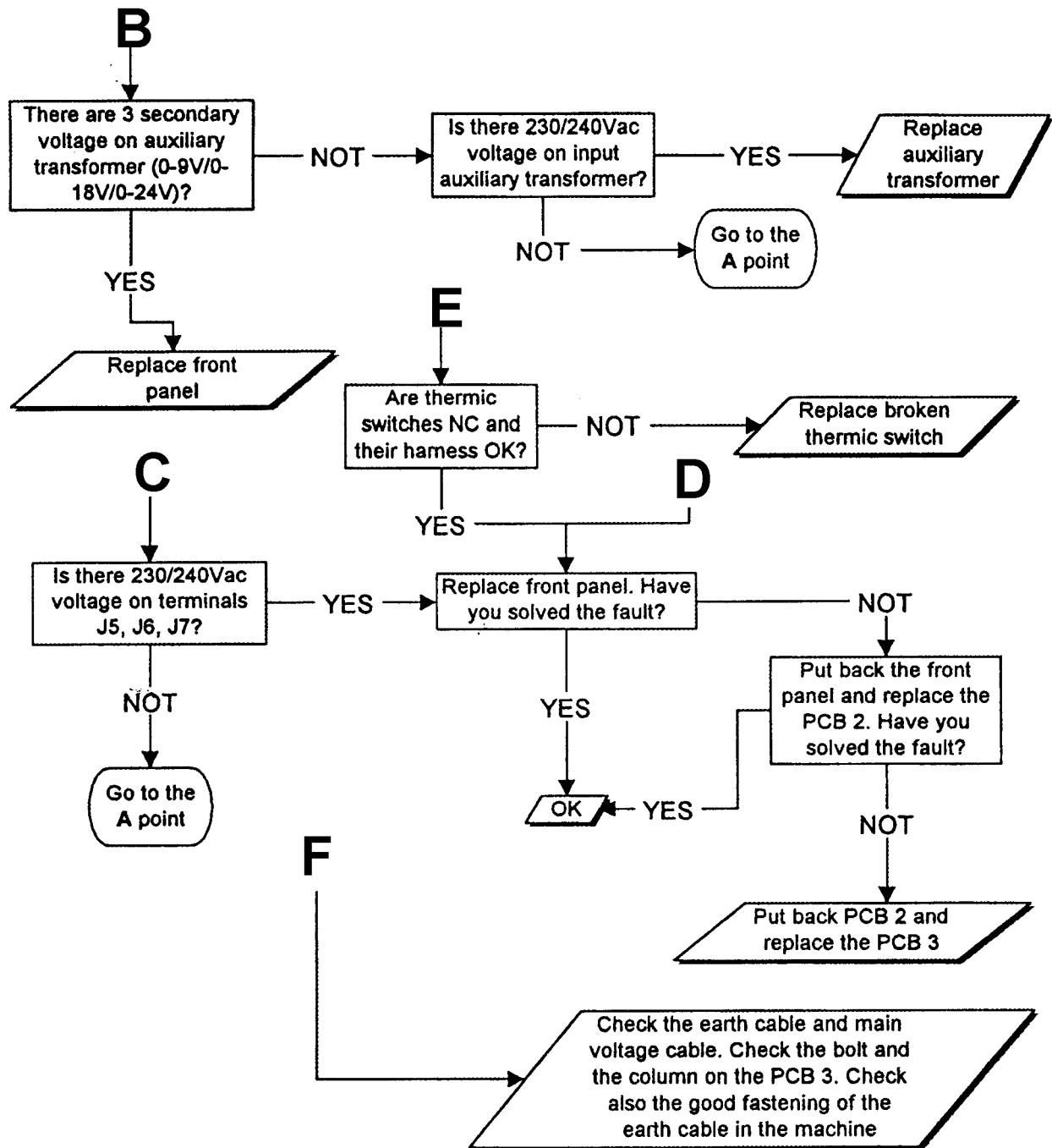
Gold Star 140 Circuit Diagram



Gold Seal 160i 1 Ph – Instructions for the First Intervention



Gold Seal 160i 1 Ph – Instructions for the First Intervention (cont)



WIA Service Bulletin # 171 Gold Seal 160i Parts List

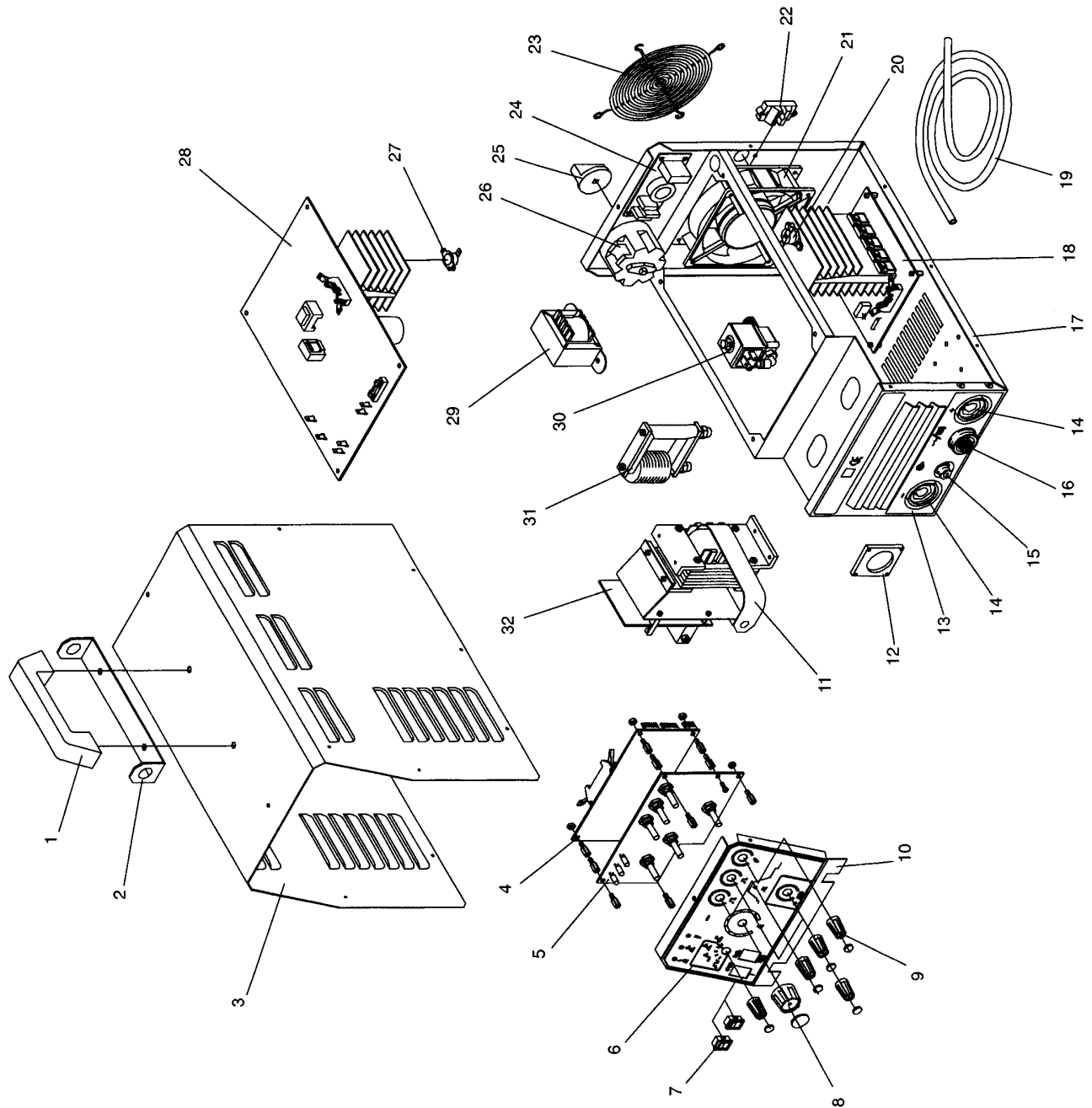


Figure 8-1. Main Assembly

Gold Seal 160i Parts List (cont)

Table 8-1. Parts List

Item	Code	Dwg	Qty	Diagram Ref.
1	156002025	UR.0.0.13	1	
2	156011021	VG.0.0.11	1	
3	156121007	VG.0.0.12	1	
4	057084088	VG.0.10	1	Logic P.C.B.6
5	057084074	VG.0.4	1	Controls P.C.B.5
6	356029201	VG.0.0.13	1	
7	056067213	VG.0.0.27	2	S2-S3
8	056020046	VG.0.0.14	1	
9	056020047	VG.0.0.15	5	
10	156118021	VG.0.0.16	1	
11	057098003	UR.1.4	1	XL
12	756005018	VG.0.0.17	1	
13	956142309	VG.0.0.18	1	
14	056076209	VG.0.0.19	2	
15	556049361	VG.0.0.20	1	
16	056076170	FS.1.0.3	1	RC1
17	156006012	VG.0.0.21	1	
18	057084075	VG.0.5	1	Sec. P.C.B.3 (V. 230)
18	057084078	VG.0.9	1	Sec. P.C.B.3 (V. 240)
19	057014097	VG.0.6	1	
20	056159012	VG.0.0.22	1	TP. 80C
21	056126062	UR.0.0.7	1	FM
22	656089028	VG.0.0.23	1	
23	116170002	UR.0.0.17	1	
24	057101005	VG.1.8	1	Filter P.C.B.1
25	056020048	VG.0.0.24	1	
26	056067212	VG.0.0.25	1	S1
27	056159011	UR.0.0.15	1	TP 60C
28	057084076	VG.0.7	1	Main P.C.B.2 (V. 230)
28	057084077	VG.0.8	1	Main P.C.B.2 (V. 240)
29	058021115	VG.6	1	T2 (V. 230)
29	058021116	VG.7	1	T2 (V. 240)
30	056061045	VG.0.0.26	1	GS
31	058021101	VG.4	1	T1
32	057084072	OP.0.3	1	HF. P.C.B.4

Gold Seal 160i Circuit Diagram

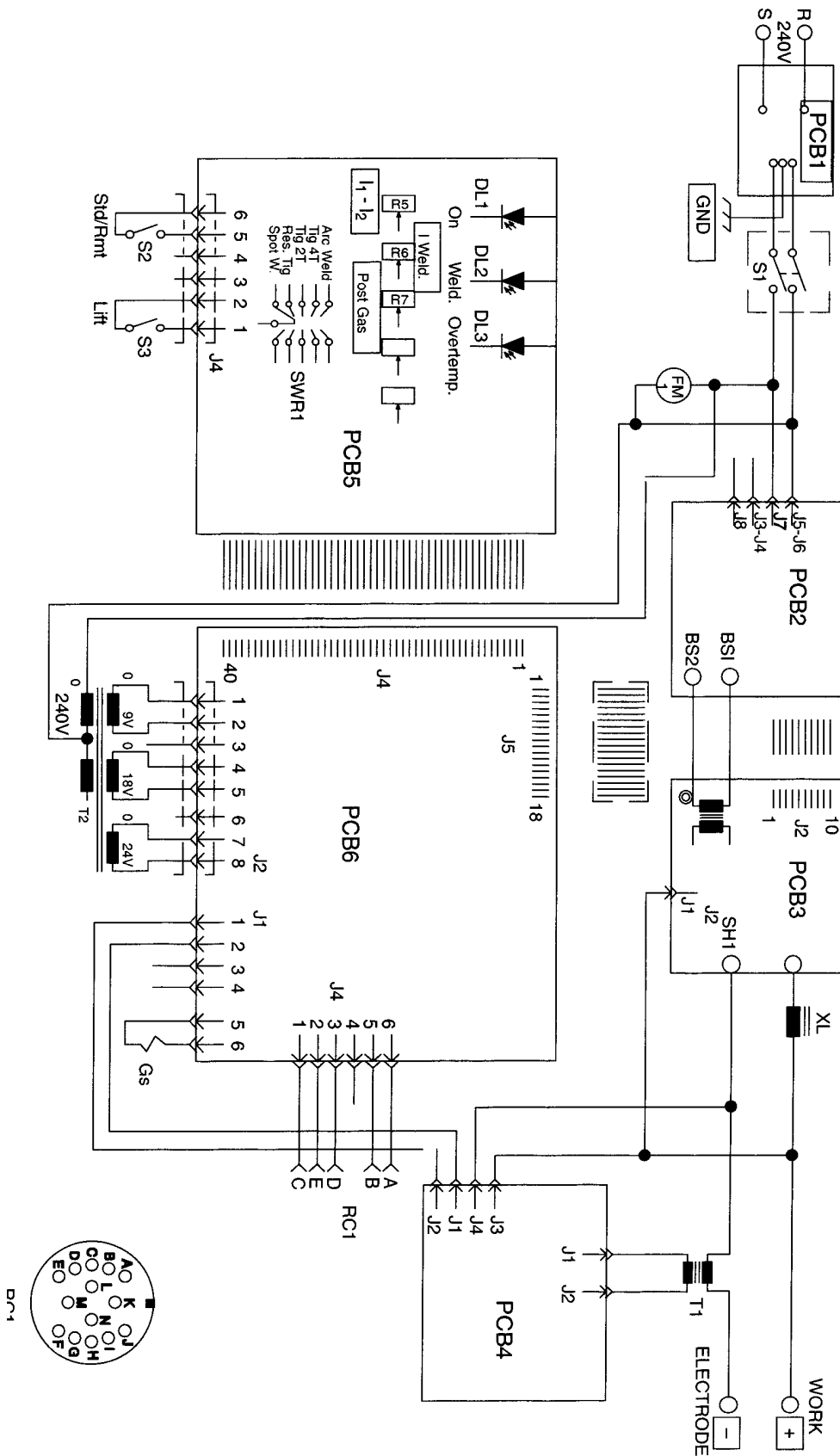


Figure 5-2. Circuit Diagram For 240 Volt Input Models