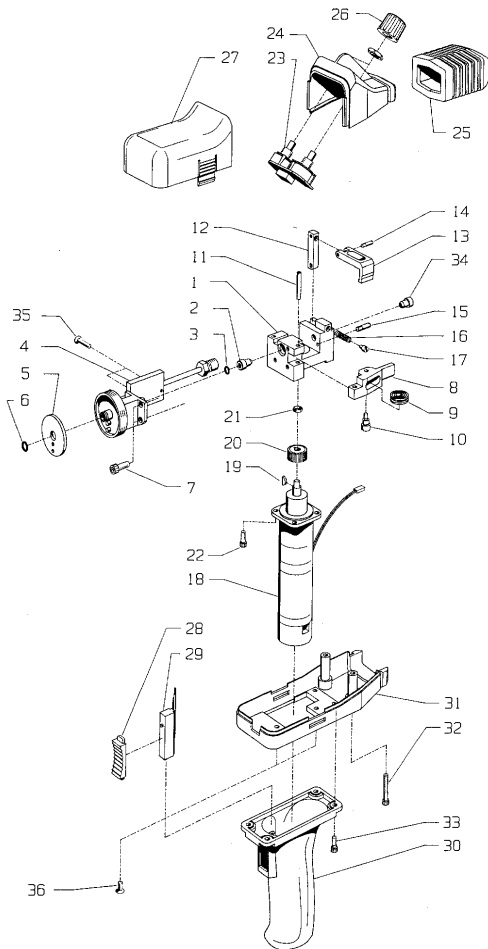


23 April 2001

BULLETIN #167

HULFTEGGER PUSH PULL GUN

PART NUMBER CHANGE



Pressure rollers (item 9 on the diagram) supplied for Hulfegger push pull guns (part numbers HT300-765 & HT300-766) now come fitted with plastic inserts which reduce their internal diameter. Accordingly, the axle which fits through the roller has a smaller diameter on new guns.

If using these rollers with a gun more than about three years old, the inserts must be removed before fitting.

There are now two part numbers for the axle for the pressure roller (item 10 on the diagram). There are also two part numbers for the pressure roller housing (item 8 on the diagram).

	Description	Part Number
Old Type	Axle ($1/4$ " internal dia.)	HT300-772
New Type	Axle ($3/16$ " internal dia.)	HT300-472
Old Type	Pressure Roller Housing	HT300-745
New Type	Pressure Roller Housing	HT300-860

Hugh Stewart,
Technical Service Co-ordinator - Marketing

QUALITY WELDING PRODUCTS, SYSTEMS AND SERVICES

The information provided in this sheet is accurate and reliable, however no warranty of accuracy or reliability is given and no responsibility arising in any other ways by errors or omissions is accepted