

3 May, 2000

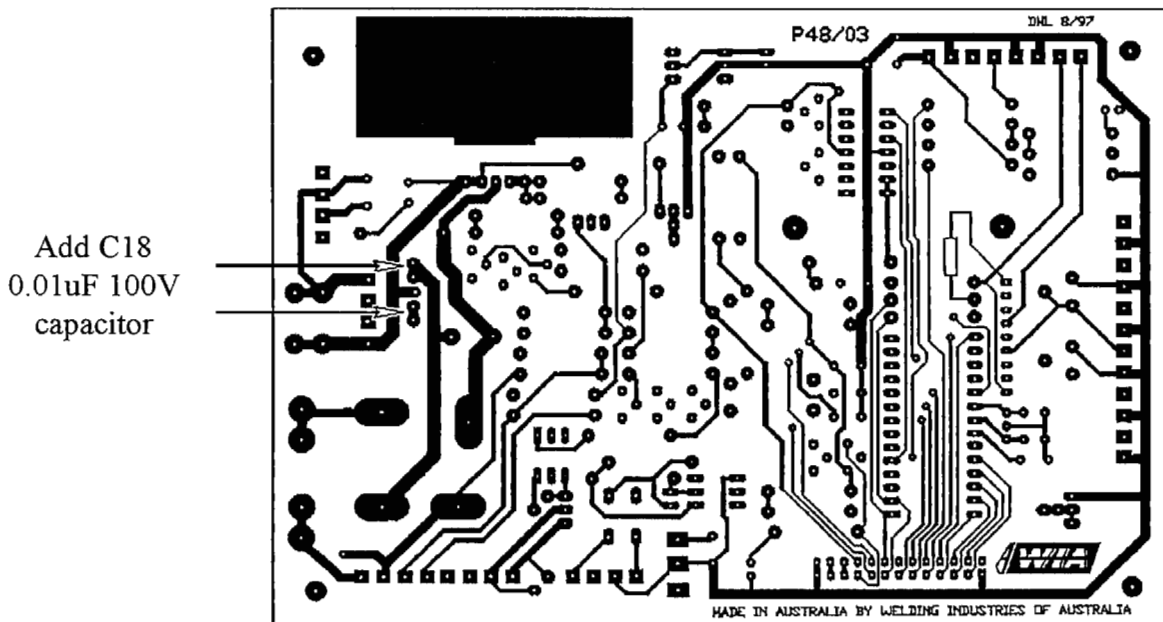
BULLETIN #163

### W41 WELDMATIC WIREFEEDER MODEL W41-0 (2RD) MODEL W41-1 (4RD)

### W41-10 PCB MODIFICATION

This is to advise a modification can be made to the W41-10 wirefeeder control PCB to overcome the overheating of MOSFET T1 and consequently, increase the protection to the braking MOSFET T2.

The modification involved with the W41-10 PCB is to add a polyester capacitor (C18) 0.01uF 100V across the gate of braking MOSFET T2 and common. WIA part number for this capacitor is CP29-20/14. This modification is as shown in the figure below. Also, please refer to the following page for the schematic diagram.



These changes has been implemented at production for all

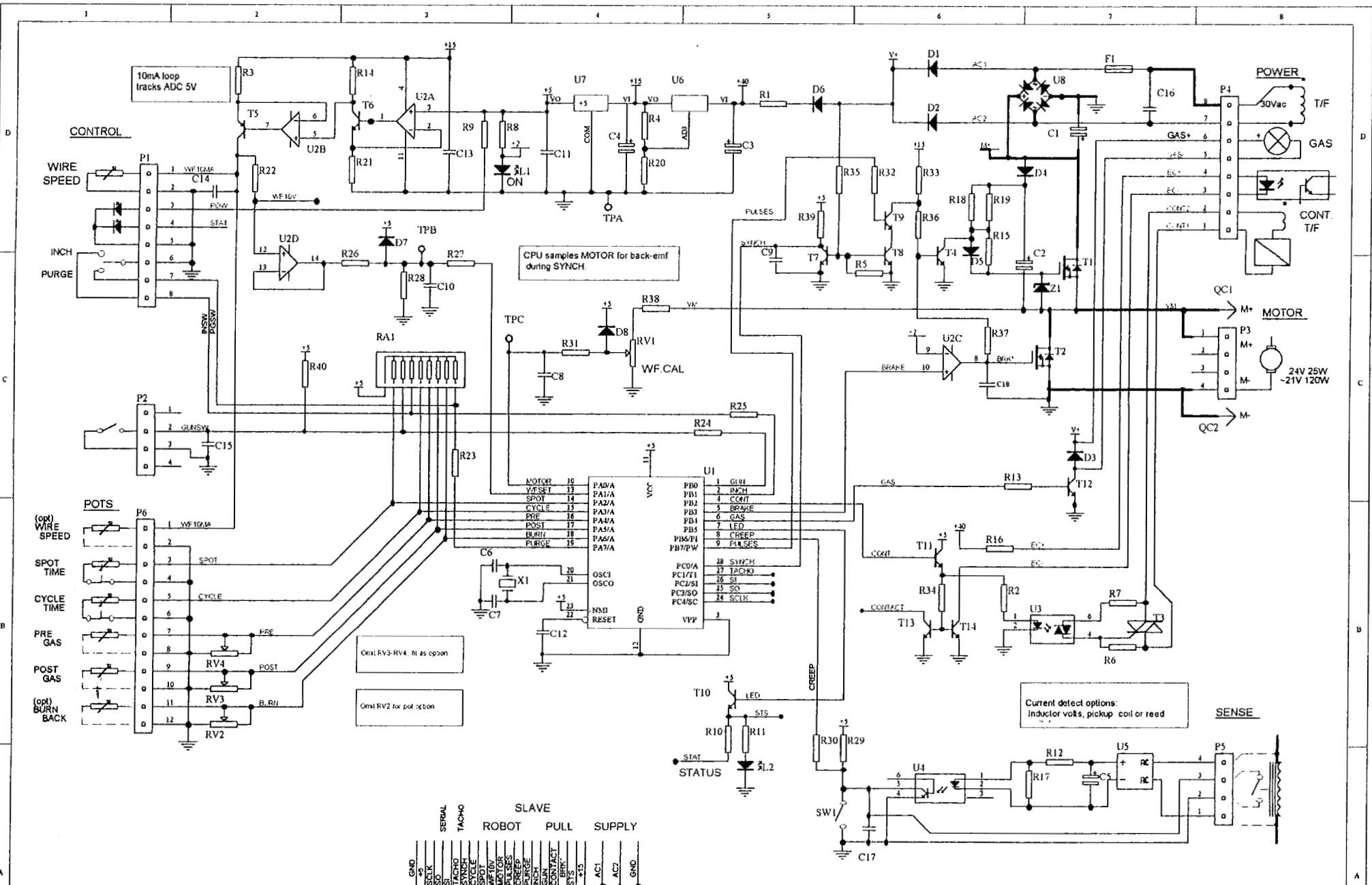
- Weldmatic 2RD beginning with serial number 41053.1
- Weldmatic 4RD beginning with serial number 41180.1



James Chin

Technical Service Co-ordinator - Marketing

QUALITY WELDING PRODUCTS, SYSTEMS AND SERVICES



**CONTROL**

WIRE SPEED  
INCH  
PURGE

P2  
1  
2  
4

POTS  
(opt) WIRE SPEED  
SPOT TIME  
CYCLE TIME  
PRE GAS  
POST GAS  
(opt) BURN BACK

**U1**  
P0/A 10  
V.F.SET 11  
SPOT 12  
CYCLE 13  
PRE 14  
POST 15  
BURN 16  
PURGE 17  
P0/A 18  
P0/A 19  
P0/A 20  
OSC1 21  
OSC0 22  
N.B. RESET 23  
VPP 24  
P0/B 1  
P0/B 2  
P0/B 3  
P0/B 4  
P0/B 5  
P0/B 6  
P0/B 7  
P0/B 8  
P0/B 9  
P0/C 10  
P0/C 11  
P0/C 12  
P0/C 13  
P0/C 14  
P0/C 15  
P0/C 16  
P0/C 17  
P0/C 18  
P0/C 19  
P0/C 20  
P0/C 21  
P0/C 22  
P0/C 23  
P0/C 24

Opt. RV3-RV4. If as option

Opt. RV2 for pot option

**SLAVE ROBOT PULL SUPPLY**

1	GND	17	CONTACT	33	AC1
2	W.F.10V	18	ST5	34	AC2
3	SCLK	19	ST5	35	GND
4	SO	20	+5		
5	TA				
6	TACHO				
7	SYNCH				
8	CYCLE				
9	SPOT				
10	W.F.10V				
11	PULSES				
12	PULSES				
13	CREEP				
14	PURGE				
15	INCH				
16	CONTACT				
17	CONTACT				
18	ST5				
19	ST5				
20	+5				
21	AC1				
22	AC2				
23	AC2				
24	GND				
25	GND				
26	GND				

OPTION

(c) WELDING INDUSTRIES OF AUSTRALIA

Title: **Smart Wirefeeder**

Size: Number **S0018** Revision

Date: 1-May-2000 Sheet of

File: C:\FS\S0018\S001801 SCH Drawn By: DML