

24 March, 1998

BULLETIN #143

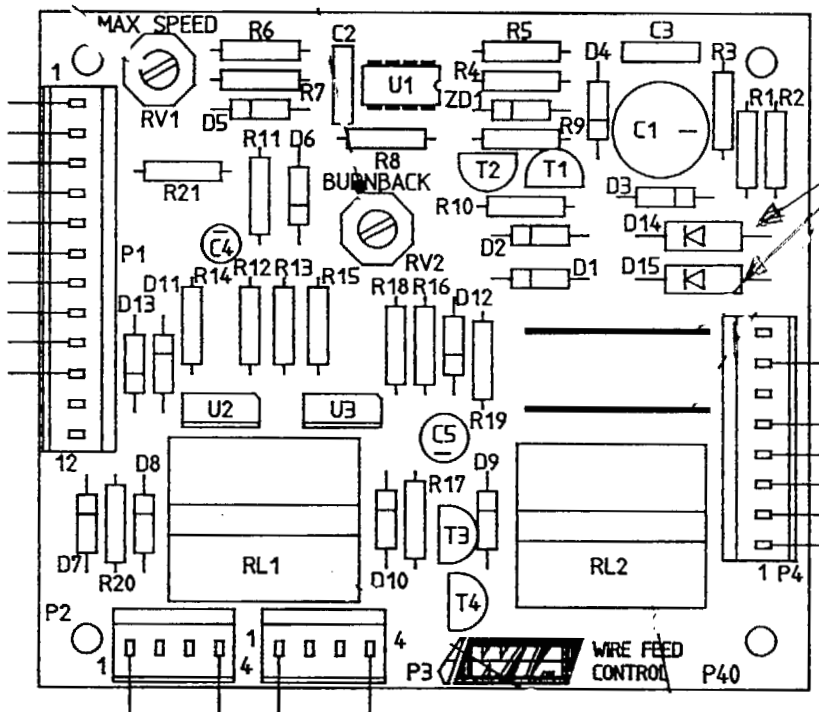
### WIREFEEDER W34

### PCB W34-10

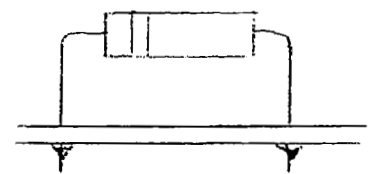
### MAIN DIODE UPGRADE

The reliability of the W34-10 circuit board can be increased by replacing the two main rectifier diodes with 5 amp devices. The WIA part number for the replacement diodes W34-10/1.

To obtain maximum cooling efficiency of the diodes, these should be fitted with the leads left as long as possible. Please see sketches below.



REPLACEMENT  
DIODES W34-10/1



LONG LEADS FOR  
IMPROVED COOLING

Gary Cheesman



Equipment Product Manager

QUALITY WELDING PRODUCTS, SYSTEMS AND SERVICES

The information provided in this sheet is accurate and reliable  
no warranty of accuracy or reliability is given and no responsibility arising in any other ways by errors or omissions is accepted