

2nd January 1997

BULLETIN#140

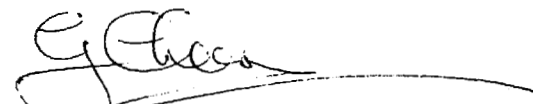
SYNCHRO-PULSE CDT(350)
MODEL CP34
WIREFEEDER BOARD MODIFICATION

This bulletin refers to all models of CP34 which incorporated a CP34-52 micro-processor board (not export models), and the earlier analog machines.

Throughout the production of these models, all documentation listed the wirefeed motherboard pcb as a W16-21, although the board was actually modified for use in the CDT.

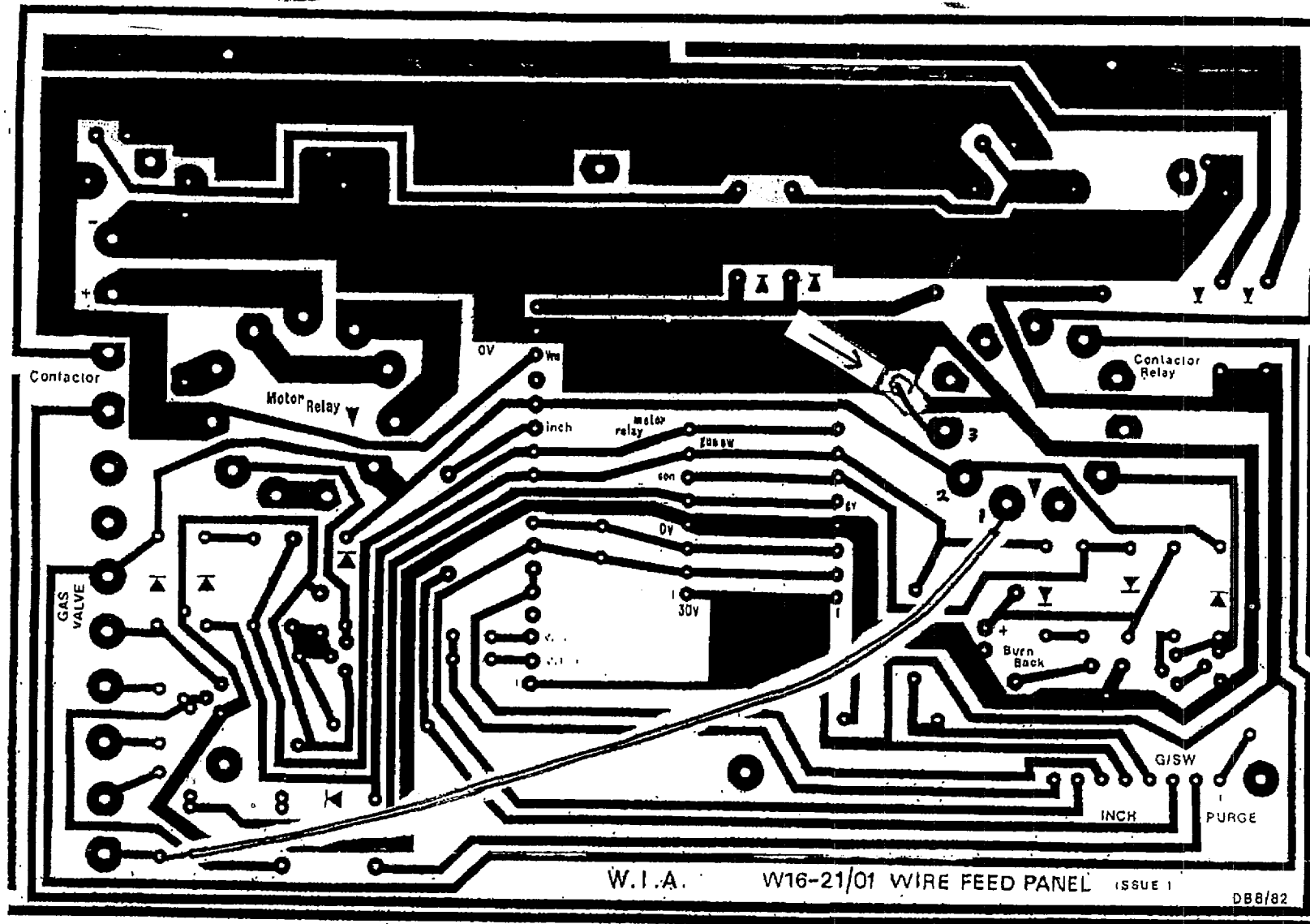
The modification connected a N.O. contact of the contactor relay between 'common' and terminal 1 of the screwed terminal strip, and became the gun switch input to the main control circuitry.

When fitting a change-over W16-21 to a CDT, please ensure the modification as detailed below is implemented.



Gary Cheesman
EQUIPMENT PRODUCT MANAGER

QUALITY PRODUCTS, SYSTEMS AND SERVICES



W16-21 MODIFICATION FOR USE WITH CP34.

1. LINK "CONTACTOR RELAY" PIN 3 TO OV
2. LINK "CONTACTOR RELAY" PIN 1 TO S1/1