

2 August, 1996

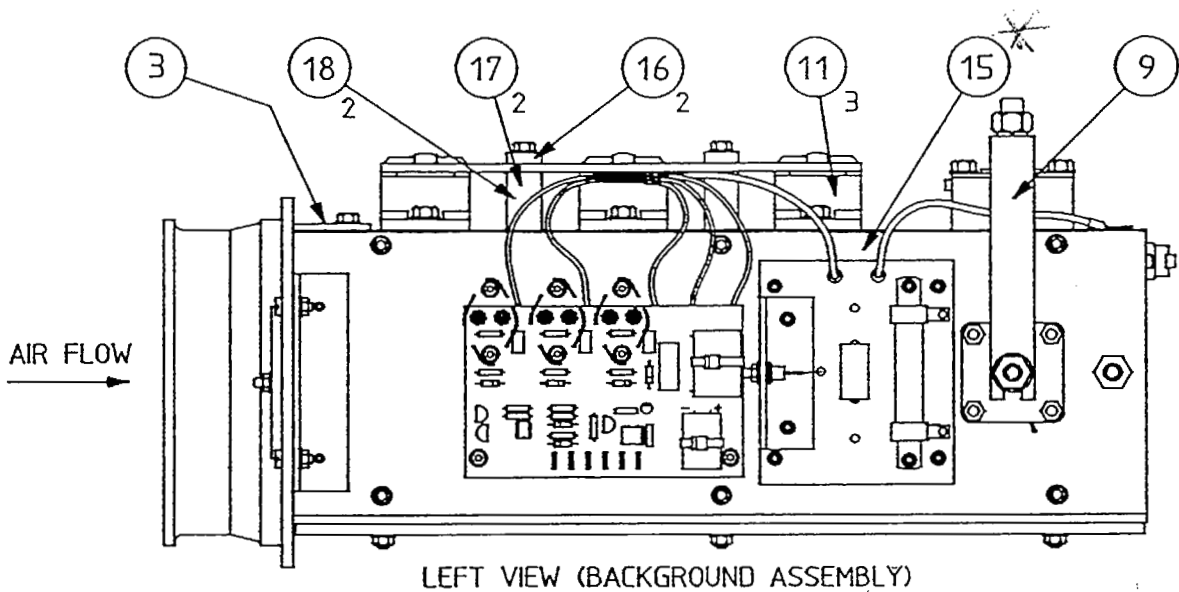
BULLETIN #136

SYNCHRO-PULSE CDT 450 OUTPUT TERMINALS LIVE

Further to CDT Owners Manual and Service Bulletin 108, another cause for the fault message "Output Terminals Live" has been identified in a CDT 450.

The cause was the failure of components on the CP38-20 SNUBBER PCB which is mounted on the left hand side plate of the main transistor switch. In this instance the snubber diode and capacitor had overheated, and the damage to the components was obvious. No reason for the failure of these components was identified.

The machine has continued to operate correctly following replacement of the snubber assembly.



Gary Cheesman
Equipment Product Manager

QUALITY PRODUCTS, SYSTEMS AND SERVICES