

5th February, 1997

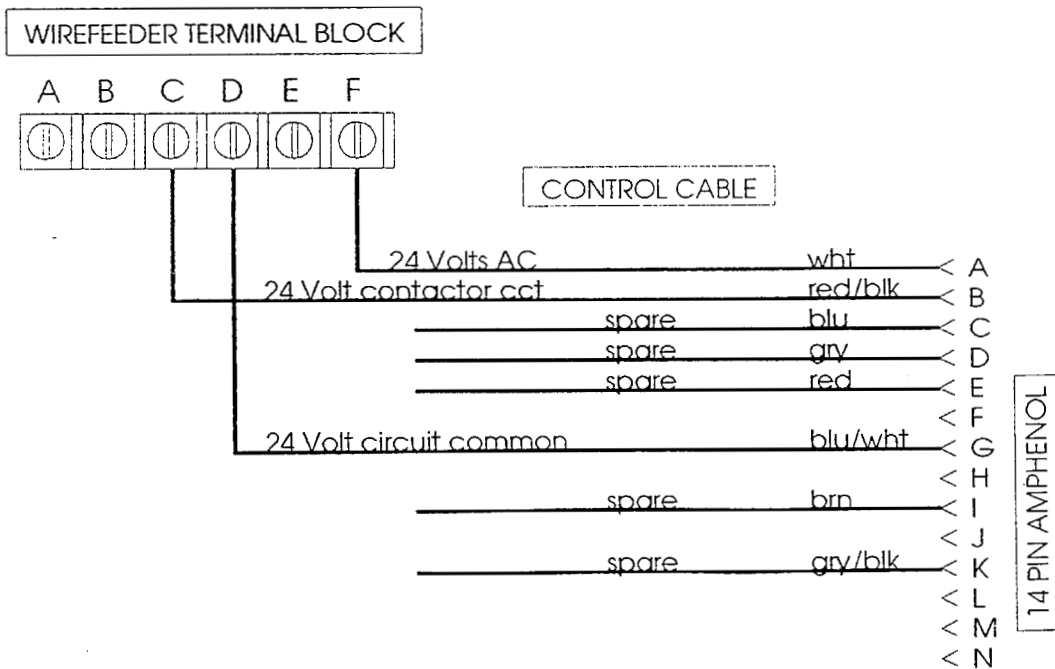
BULLETIN #133 Rev.A

### CONSTRUCTOR WF22 - MILLER S22A CONTROL CABLE CONNECTIONS CONTROL CABLE IN AM 264-0 KIT

This bulletin replaces previously issued bulletin #133 (October 1995). The wiring information in that bulletin was incorrect !

When fitting the control cable to a WF22 / S22, the three wires terminated with spade lugs should be fitted as shown below. The remaining five wires are only required for some wirefeeder options, and should be otherwise taped-off.

Thanks to David Strange for advising of this correction.



  
 Gary Cheesman  
 Equipment Product Manager