

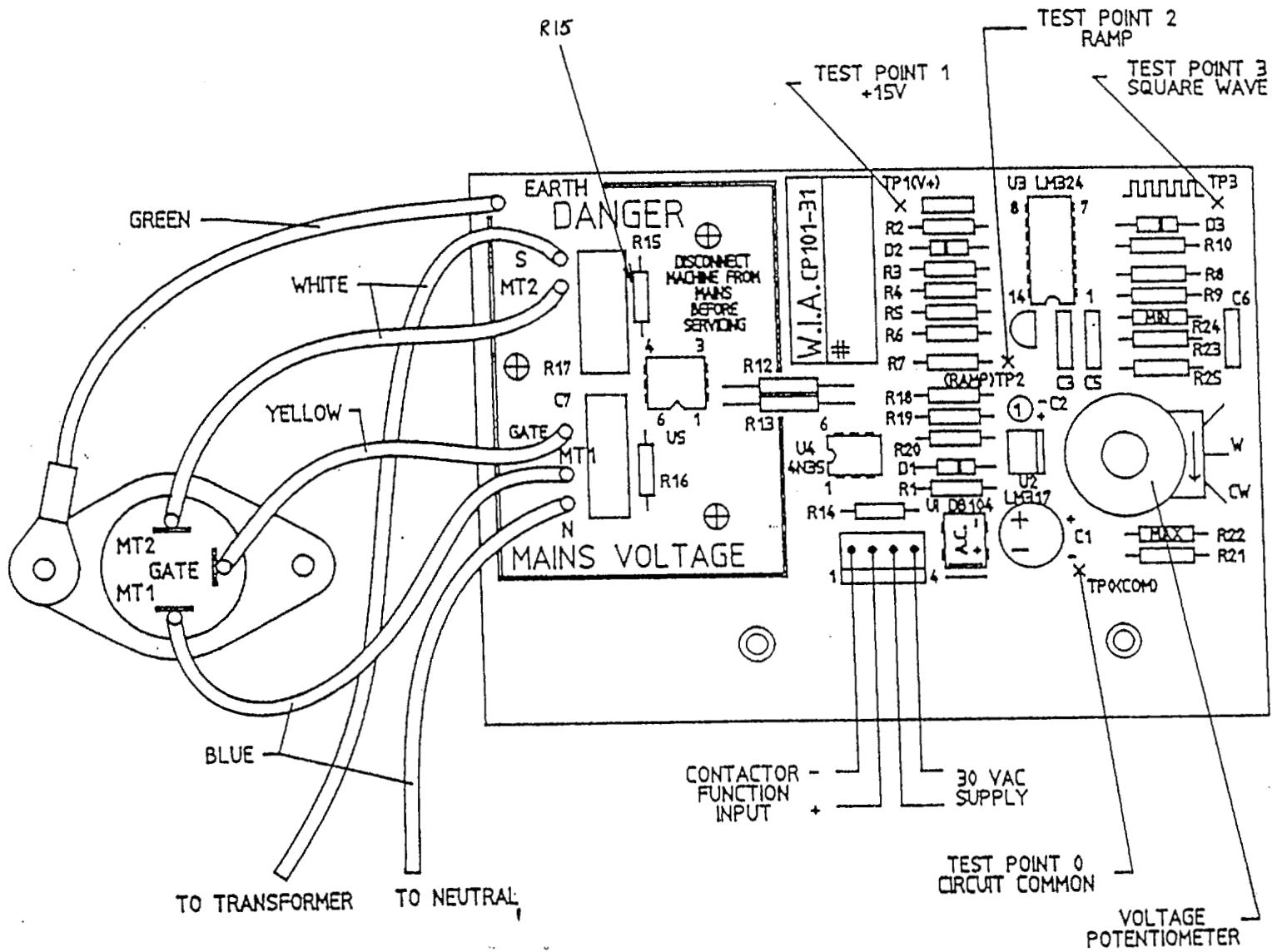
17 JULY, 1991

BULLETIN.011

## WELDMATIC 160S: CP101 CP101-31 TRIAC CONTROL PCB

Early production models of this PCB were found to have problems with resistor R15 breaking down, resulting in no welding output power.

This resistor has now been replaced with a version which has a higher voltage rating, the part number now being CP101-11/3 (390 Ohm 1W 500V).



TRIAC CONTROL BOARD CP101-31