

5 JULY, 1991

BULLETIN.010

WIREFEEDER: W17 W16-21 MOTHERBOARD PCB

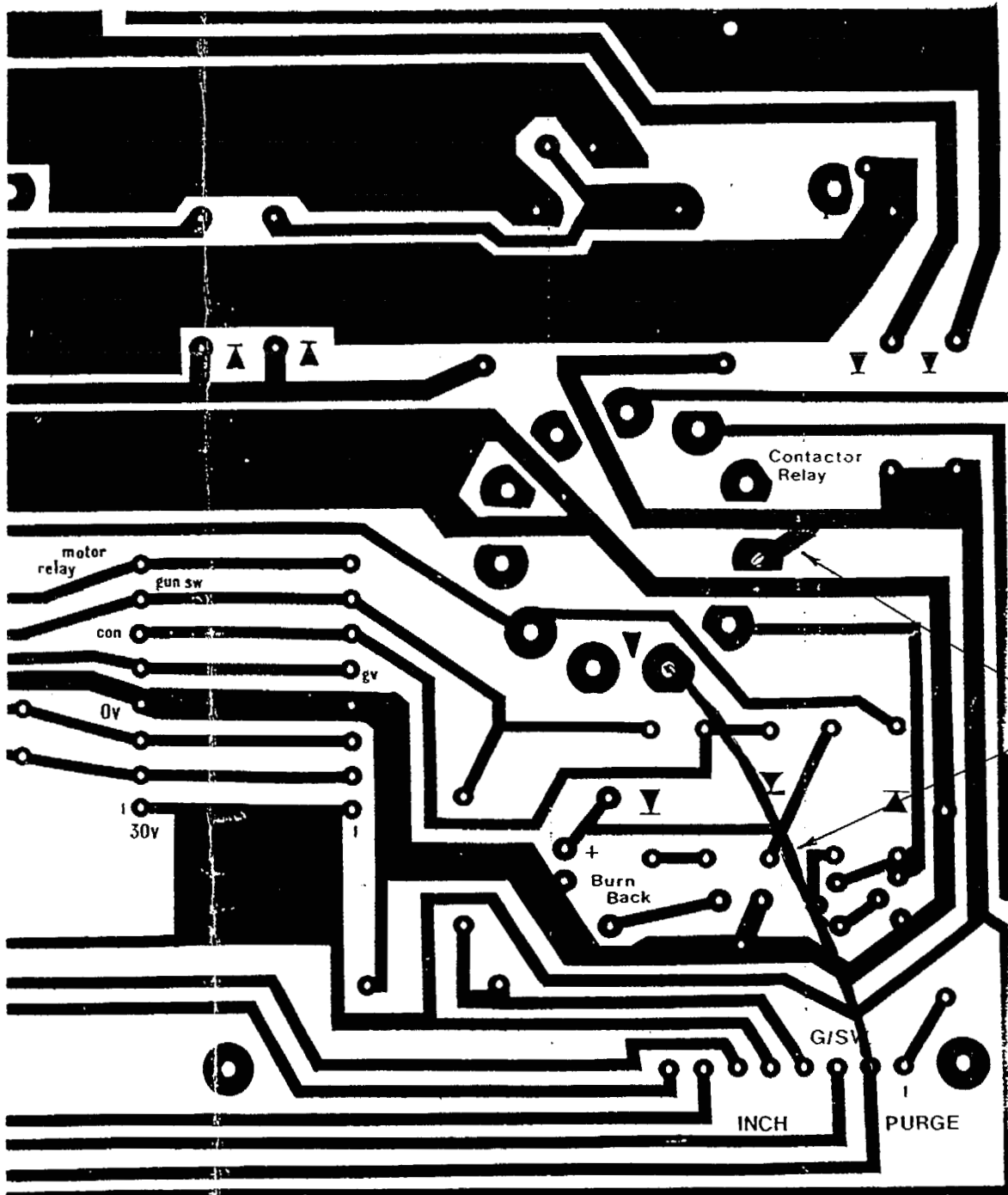
If problems appear at the end of a weld due to the lack of some post-flow gas, the W16-21 motherboard can be modified to connect the gas valve to the contactor burnback circuit, enabling a slightly longer period of gas operation.

Pin 2 and P1 should be connected to the +ve rail via a normally-open set of contacts on the K2 contactor relay.

Refer to attached drawing for further explanation.

Mod to connect Purge to B/Back control pot. time
Gives slightly extra time of Post Flow.

5/2/91



Add links.