



# WIA Blue Helmet

Part No: 235620

DESIGNED FOR THE WELDER WHO WANTS PROTECTION, PERFORMANCE & COMFORT AT AN AFFORDABLE PRICE.



## AUSTRALIAN STANDARDS

### AUSTRALIAN STANDARDS

Tested in Australia, the lens and helmet comply with Australian Standards AS/NZS 1338.1 (Auto-Darkening) and AS/NZS 1337.1 B (High Impact).



### VARIABLE SHADE CONTROL

Variable control for adjustment of shade, lens sensitivity and delay for maximum control when welding. Shade 9-13.



### BIG VIEWING AREA

With a viewing area larger than most helmets in its class, the operator gets a better visual of the working area.



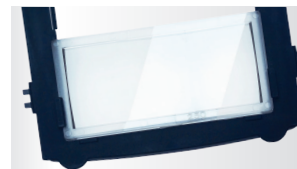
### CONVENIENT EXTERNAL SHADE CONTROL

Provides flexibility to adjust shade control while welding.



### OPERATOR COMFORT

High quality headgear - comfortable, lightweight and fully adjustable for easy adjustment to provide maximum face and neck protection. Weighs only 515g.



### MAGNIFYING LENS HOLDER

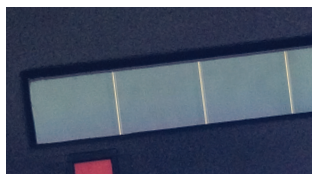
Built-in provision for magnifying lens\*, if required. \*Magnifying lens not included.





# WIA Blue Helmet

Part No: 235620



### BATTERY POWERED WITH SOLAR-ASSIST

For exceptionally long life and no charging required! Features auto on/off function and low battery indicator. Delivers up to 1500 hours of interruption free welding with MIG, Stick and Inverter power sources - meaning your helmet will always be ready to go when you are. Replaceable battery.



### GRIND MODE

Comes standard with Grind Mode, meaning you can use one helmet for all your welding requirements - including weld preparation and clean-up.



### DUAL ARC SENSORS

Provides continuous arc sensing capability. Lens automatically switches from light state 4 to adjustable welding shades 9-13 when an arc is struck. Lens darkening reaction time 1/10,000 sec.



### 1 YEAR WARRANTY

Like all WIA products, this product is manufactured with quality in mind. Tested under stringent conditions, we provide a 1 year warranty for your peace of mind.

PRODUCT SPECIFICATIONS	
Part Number	235620
Viewing Area	97 X 46mm
Cartridge Size	110 X 90mm
Variable Shades	9 to 13
Light State	4
Grind Mode	Yes
Switching Speed (Light to Dark)	1/10,000 Sec
Delay Speed (Dark to Light)	0.1 - 1.0 Sec
Arc Sensors	2
Weight	515g
Power	Lithium Battery & Solar-Assist
On/Off Control	Automatic
Operating Temperature	-5 °C to +55 °C
Warranty	1 Year (Auto-Darkening Lens Only)

STANDARDS	
AS/NZS 1338.1 (Auto-Darkening)	
AS/NZS 1337.1 B (High Impact)	
ANSI Z87.1-2003 (High Impact)	
DIN/TUV/CSA	

PARTS AND ACCESSORIES	
Front Lens Gasket	235758
Front Cover Lens (pkt 5)	235621P
Replacement Filter Lens (Indent)	770671
Inside Cover Lens (pkt 5)	770237P
Ratchet Headgear Assembly	770246
Replaceable Battery	217043

Not Suitable for Low Current TIG Applications.  
Refer to Performance, Digital Elite and Titanium Helmets.